

# Wright & Morten Equine Newsletter



[www.wmvets.co.uk](http://www.wmvets.co.uk)

August 2019

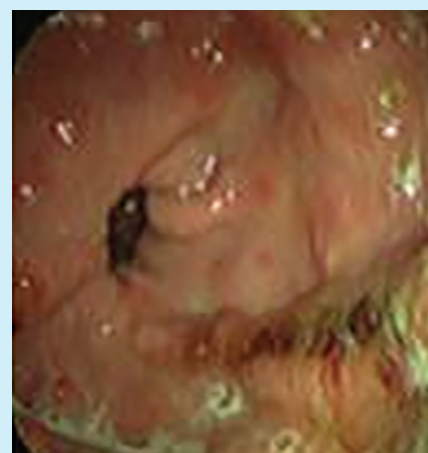
## Did you know we do personalised diet assessment and weight loss plans?

One recent success story is Louis who weighed in at 460kg. He was finding life a little challenging at the weight he was, and had fat deposits along his crest, back and quarters which are high risk factors of equine metabolic syndrome (EMS). It was important that we put together a plan that would help reduce his weight and break down these fat deposits. A plan was put into place which covered hard feed, forage feeding, routine, turnout, exercise, even down to what rugs he was to wear as these are all contributing factors to regulation. With the hard work, dedication and commitment from his owner, we had great success and Louis achieved a 40kg weight loss taking him down to 420kg! As a result he is so much happier in day to day life and during his work. We think he looks incredible!!

For just £20 Georgia will conduct a phone consultation to establish your normal feed and management systems then tailor-make a plan to suit you and your horse. For a small extra fee she will come to the yard, meet your horse, assess your grazing, setup and current feed and then go away to create your tailor made plan! Ring us on 01260 280800 to arrange a consultation!



## Gastric ulcer client evening



We are hosting a client evening at the pavilion at Somerford Park Farm on Thursday 8th August at 7pm. The topic is Gastric Ulcers. Our vet Rachel will be talking on the topic with many pictures and cases to share with you! There will be a gastroscope at the evening for you to see and opportunities to ask questions and get involved.

Teas and coffees will be available throughout the evening.



Please call 01260 280800 to book your place!

The Animal Health Trust recommends five basic protocols:

## VACCINATE

BOOST YOUR HORSE'S VACCINATION IF IT WAS GIVEN

MORE THAN **6 MONTHS** AGO

AND ENCOURAGE OTHERS TO DO THE SAME

If your horse is not vaccinated, it will need to start a course of vaccinations and will not have protection until two weeks after the second vaccine in the course is given.

## COMMUNICATE

**BE OPEN**

If you have a suspected or confirmed outbreak, tell others and help minimise the spread of flu.

## ISOLATE



WHAT BIOSECURITY MEASURES ARE IN PLACE AT YOUR OWN YARD?

Immediately isolate new or unwell horses away from the main yard. Flu is easily spread amongst a group of horses.

## MITIGATE

DO ALL YOU CAN TO KNOW

THE RISK OF MOVING YOUR HORSE OR ATTENDING AN EVENT.



Mitigate against the risk and make your own sensible decision based on this.

## INVESTIGATE

#1 IF YOU SUSPECT EQUINE FLU

CALL YOUR VET IMMEDIATELY TO INVESTIGATE



#2 IF YOU'RE PLANNING TO ATTEND AN EVENT OR EQUINE GATHERING,



CONTACT THE ORGANISERS & ASK ABOUT THEIR BIOSECURITY POLICIES

If you are not comfortable with what is in place, don't attend!

The latest information from the Animal Health Trust on equine flu outbreaks is available from [www.equiflunet.org.uk](http://www.equiflunet.org.uk) or by following @equiflunet on Twitter.

Charity No 209642

## Equine Flu Update

Equine Flu is unfortunately still spreading around the UK including recent outbreaks in Cheshire and Derbyshire. When the outbreak started at the beginning of the year we had 5 cases confirmed in January, then 35 in February. Since then the number of new cases has been slowly rising with 207 cases confirmed since the start of the outbreak and 17th of July. There were 63 confirmed cases in June which is the highest number diagnosed per month since the outbreak began. To put these numbers in context in the whole of 2018 only 2 cases were confirmed. So Sadly this outbreak is far from over.

Equine flu is very contagious and spreads rapidly. Our best defence against this is vaccination. Many show venues, yards and organisations are advising 6 monthly vaccination to help boost the immune response as it starts to reduce after the booster. The Animal Health Trust (AHT) which is the leading research centre for equine flu and which performs all the diagnostic tests has given the advice in the picture above.

Somerford Park farm is one of the venues asking for 6 monthly boosters, for every horse visiting including those using the farm ride. This is to protect all the horses that visit and live here. Our clinic is included in this so before coming in to us please check your vaccinations are up to date with a booster having been given in the last 6 months.

### The most common clinical signs of Flu are:

- Harsh, Dry Cough
- Nasal Discharge
- High Temperature
- Lethargy
- Poor appetite

If you think your horse has any of these signs please call us as it is important to act quickly and provide treatment to help with the symptoms making your horse feel better. It is also important to diagnose and isolate infected

horses as quickly as possible to reduce the spread of disease.

If you have any questions you can call the office and talk to one of our vets. Equiflunet is an online site run by AHT and is a very good source of information as well.

If your horse needs a booster vaccination please call the Somerford clinic on 01260 280800. These are an ideal use of our Zone visits where you will not be charged a visit fee on a specific day in your area if you are booked onto the Zone. However they fill up fast so it's best to book early.



### EQUINE CLINIC

Somerford Park, Holmes Chapel Road,  
Somerford, Cheshire, CW12 4SW

Tel: 01260 280800

Email: [somerford@wmvets.co.uk](mailto:somerford@wmvets.co.uk)

 Like us on Facebook for up-to-date news and the latest events!  
Search 'Wright & Morten Equine Clinic.'