

Wright & Morten Equine Newsletter



www.wmvets.co.uk

September 2018

Vaccine Amnesty Months – September and October

Our Annual Vaccine Amnesty is back during **September and October**. If your horse is over 12 months old and their vaccines are overdue by 3 months or more, we can cut the cost of vaccination.

- Vaccination against Influenza (“Flu”) is very important if your horse travels to shows, or if you are on a busy yard with other horses going out and about.
- Flu can spread very quickly between horses and they can become very ill if they are not vaccinated.
- Tetanus is also a disease we can prevent. Vaccination is very reliable which is important, as tetanus is almost always deadly!
- The cost of your first 2 vaccinations when you restart in September or October will be £60 for both!
- All this can be done on our Zone days with no visit fee!



Care of our Old Friends – September to November Promotion



As we move into the Autumn, our attention is often drawn to making sure our old equine friends are ready for the cold season. The most common questions relate to whether the horse is under or overweight, dental care, foot care, and other issues like managing ongoing diseases such as arthritis and Cushing’s Disease. We know this can be a daunting time for people. So, this year we are running an Old Friends Promotion between the months of **September and November**.

The Old Friends promotion will be run by Liz Brown. Liz is a very experienced member of the team, and has an in-depth knowledge of care of the older horse and pony.

The Old Friends Promotion will be charged at £110 plus a standard visit fee. Included in this is:

- a full clinical examination of your horse,
- a dental assessment,
- a discussion on current health issues, general management, worming and nutrition.
- a full detailed blood profile checking, amongst other things liver and kidney function, blood haematology and Cushing’s disease.
- 10% discount off subsequent routine dental work.
- 10% discount on vaccinations administered during the appointment.
- Access to our long-term medication scheme for reduced price medicines.

The £110 cost is a promotional offer, and is a saving of £105 from our normal fees (regular cost including the lab fees is £215).

Welcome Rosie

We are delighted to welcome Rosie Alcorn to our team of equine vets. Rosie graduated from the University of Liverpool in 2018, and is interested in all aspects of equine veterinary practice.

Rosie is joining us as a locum during the Summer and Autumn to help us the practice continue to provide a first class service for your horse. In her spare time Rosie is a very accomplished event rider and can commonly be seen competing across the UK and Ireland.



Calling the Office

Just to remind clients that you can now call us on either **01477 571000** or **08458 330034**.

Dentistry at Wright and Morten



Dentistry has always been a major part of the veterinary work we perform both on the road and in the clinic. We have a team of vets who between them run the dental services we offer. Each of these vets is fully equipped with an extensive kit of gags, head torches, head stands and motorised dental equipment. The team is led by Mark Tabachnik and Nic Harries, both of whom are dual qualified as vets and equine dental

technicians (EDTs) having passed the British Association of Equine Dental Technicians (BAEDT) examination, and both are members of the Equine Veterinary Dental Association (EVDA).

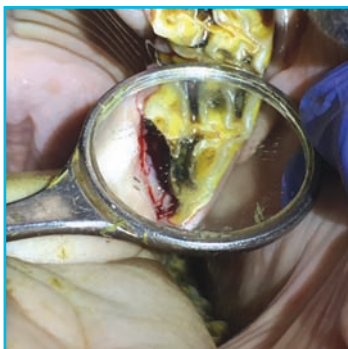
Common and Uncommon Problems

Horses can suffer from dental disease for a number of reasons. Sharp enamel points to the teeth can cut into the cheeks. This is because horses' teeth erupt continuously throughout their lives. As the teeth erupt, they are worn down except for the enamel points at their edges which can cut into the cheeks and tongues.

Problems can also be caused by overgrowths caused by misaligned or missing teeth. Gum disease is both common and painful. It can be caused by food materials getting packed into the spaces between teeth.

Signs of Dental Disease

Signs that your horse is suffering from dental disease vary. The most commonly recognised sign is horses dropping partially chewed clumps of food from their mouths (we call this 'quidding'). Difficulty taking a contact when ridden is another common problem. Weight loss only happens in the later stages of disease. However, signs of dental disease can be subtle, and the horse might not show any signs at all. For this reason we would always advise horses' teeth are checked thoroughly on a regular basis.



Routine Rasping

Most horses require their teeth checked once or twice a year. We would perform a thorough examination using a gag and a head torch, and devise a treatment plan. We routinely use motorised dental equipment as they are much more precise than the old-fashioned hand rasps. We would leave you with a dental chart which contains a record of our findings and recommendations.



Sedation

We believe that all equine dentistry should be both stress-free for our patients and safe for ourselves and our clients. We therefore routinely sedate all our equine patients for dental examinations. Our horses are given a small amount of

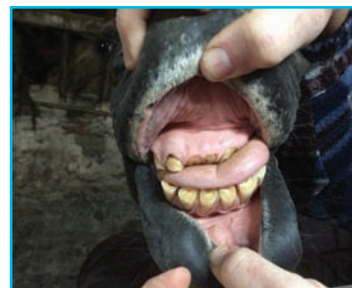
sedation intravenously which allows them to relax. We believe this both allows us to perform more thorough examinations and treatments, and is less stressful for our patients.

Zone Visits

We run dental zones in each different area of the practice on different days. This is for routine dentistry with sedation at a fixed price. This saves you a visit fee. Our dental zone days are very popular and a booked several months in advance. You book a slot by phoning the office. We then call you back and give you the approximate window for the vet's arrival. We ask for a £20 deposit at the time of booking the appointment and the balance of payment is due on the day of the zone visit.

Yard Visits

You can get together with your yard mates and arrange for one of our dental vets to do a yard visit. This is



a convenient and cost-effective way to access routine dentistry. **We do not charge a visit fee for groups of four horses or more.**

Non-Routine Dentistry

We perform a large number of more specialised procedures, and commonly take referrals from vets and EDTs. These procedures, such as fillings, extractions or treatment of gum disease, are generally by appointment at our clinic at Somerford Park Farm.




FARM AND EQUINE

The Barn, Holly Tree Farm,
Holmes Chapel Road
Lower Withington, Macclesfield,
Cheshire, SK11 9DT

Tel: 01477 571000

Email: hollytree@wmvets.co.uk

 Like us on Facebook for up-to-date news and the latest events! Search 'Wright & Morten Equine Animal Services'

